



Guam SOLID WASTE RECEIVER



Briefing for the GSWA Board



February 20, 2025

1:00 PM ChST





Guam SOLID WASTE RECEIVER



Topics

1. Leachate Flow Update
2. GWA Claim Update
3. Requested Topic – GWA Legal Cost
4. Post-Closure Accounts Update
5. Transition Plan and Termination of Receivership
6. Requested Topic – Similarly Closed Dumps Research



Ordot Dump, Ordot, Guam
Source: Google Maps



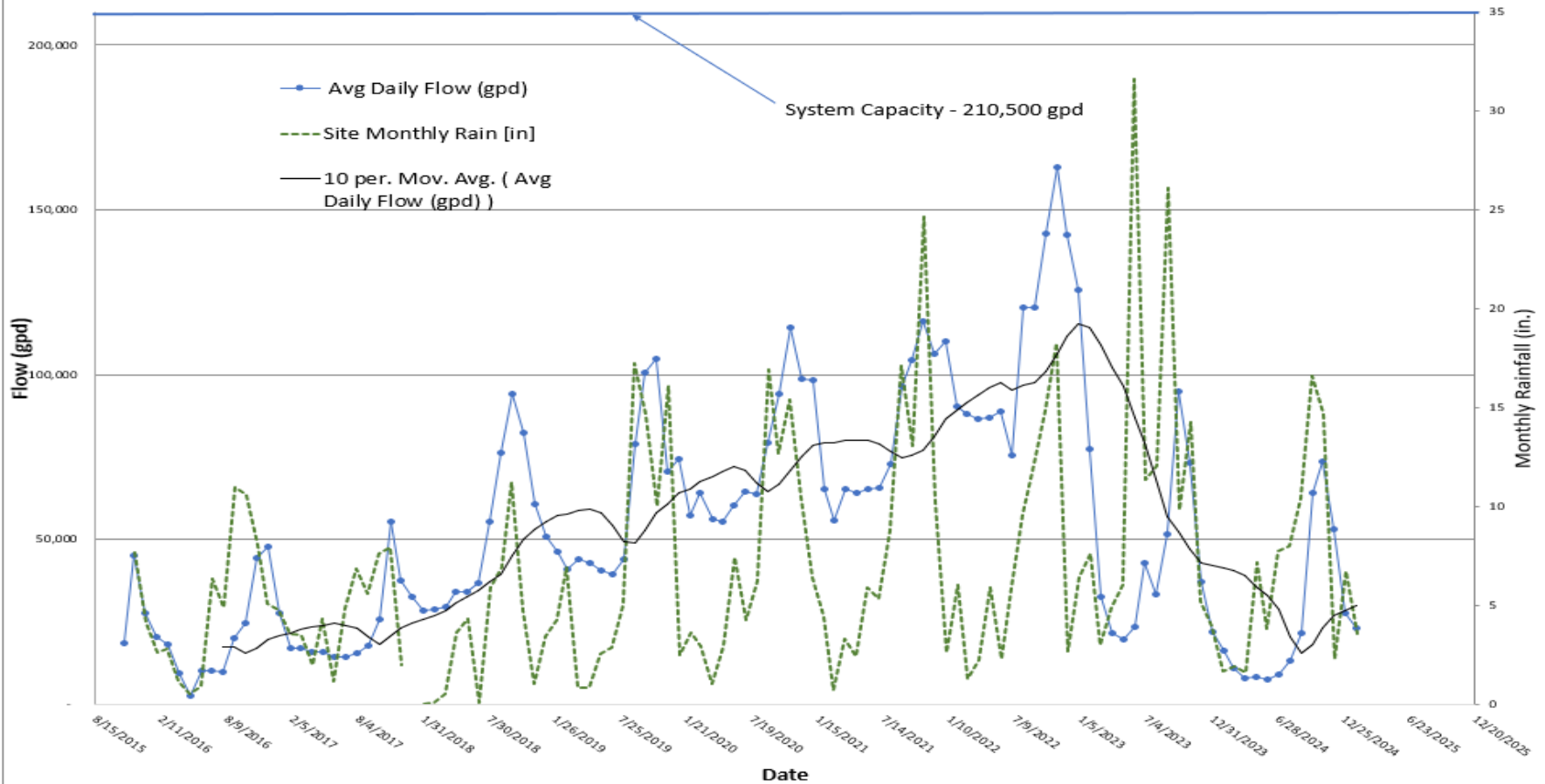


Guam SOLID WASTE RECEIVER



1. Leachate Flow Update

Daily Average Flow and Rainfall by Month Based on GWA Meter





Guam SOLID WASTE RECEIVER



1. Leachate Flow Update (cont'd)

2024 leachate flows now closer to those levels experienced in 2016 and 2017 now that GWA Dero Road leaks no longer impact the Ordot Dump Facility

Year	Leachate (Gallons)
2016	7,397,019
2017	8,518,884
2018	18,658,285
2019	23,952,805
2020	27,748,045
2021	30,040,379
2022 (GWA leaks repaired in December)	40,976,930
2023	15,870,700
2024	9,473,154
2025 (January Only)	713,713 (est)





Guam SOLID WASTE RECEIVER



1. Leachate Flow Update (cont'd)

GWA Leachate Treated and Charges

Year	Leachate (Gallons)	Charges
2022	40,976,930	\$1,126,653.88
2023	15,870,700	\$358,176.30
2024	9,473,154	\$152,382.65
2025 (Through 1/31/25)	713,713 (est)	\$12,120(est)





Guam SOLID WASTE RECEIVER



2. GWA Claim Update

- 12/23/24 - Court's Order (ECF 2145) "Irvin Slike, GSWA Board and legal counsel to work cooperatively with Receiver and its legal counsel to resolve this matters as expeditiously as possible.... and the Receiver and its counsel will take the lead and must be full participants in said negotiations."
- 1/15/25 - Receiver, GWA, GSWA Chairman commenced settlement discussions - subject to confidential agreement
- 1/15/25 - Receiver made a counter-offer to GWA
- 2/14/25 - GWA responded to 1/15/25 Receiver Counteroffer
- Receiver is preparing response and will confer with GSWA Chairman, Irvin Slike, and GSWA counsel regarding response to 2/14/25 GWA response

DB Insurance defaulted on complaint and requested an extension to respond to January 28, 2025, which the Receiver has granted. Motion to Dismiss filed by DB Insurance & GWA. GBB/GSWA opposition due 2/27/25





Guam SOLID WASTE RECEIVER



3. Requested Topic – GWA Legal Costs

GWA Claim - Legal Service Cost Summary	
Culhane Meadows PLLC	\$3,996.00
Civille & Tang, PLLC	\$24,704.50
10% Fee on Expenses	\$2,870.05
Total Civille & Tang, PLLC + Culhane Meadows PLLC	\$31,570.55
GK2, Inc. Expert Report and Services (includes 10% Fee on Expenses)	\$30,624.94
Total GWA Claim Legal Service Costs (June 2023 - December 2024)	\$62,195.49





Guam SOLID WASTE RECEIVER



4. Post-Closure Funds Status

Bank of Guam Account	Balances As of December 31, 2024	Balances As of January 31, 2025
TDOA Treasurer***3788	\$ 756,715.48	\$ 292,454.68
Investment 5159***	\$ 5,668,026.23	\$ 5,687,696.42
RCRA Trust 5175***	\$ 32,758,390.34	\$ 32,869,616.69
Total	\$ 39,183,132.05	\$ 38,849,767.79





Guam SOLID WASTE RECEIVER



5. Transition Plan and Termination of Receivership

- **Remaining Consent Decree Requirements**
 - GEPA Portion of the SEP Completion Report accepted by US EPA
 - Certification of Cessation of Discharges to US waters filed and accepted by the US EPA
- **12/23/24 Court Order (ECF 2145):**
 - "Since the Attorney General has not yet issued its opinion on the issue and because it is not clear whether further investigation or remediation work is necessary with regard to the SEEP investigations, it is premature to approve the Transition Plan."
 - "The Receiver shall remain until compliance with the Consent Decree is achieved or until further order of this Court."





Guam SOLID WASTE RECEIVER



6. Requested Topic - Similarly Closed Dumps Research

- GSWA Board has asked how Florida landfills referenced by the General Manager compare to the Ordot Dump
- Sources include permits, permit applications, monitoring reports, etc. available on the Florida Department of Environmental Protection Information Portal:
 - <https://prodenv.dep.state.fl.us/DepNexus/public/searchPortal>

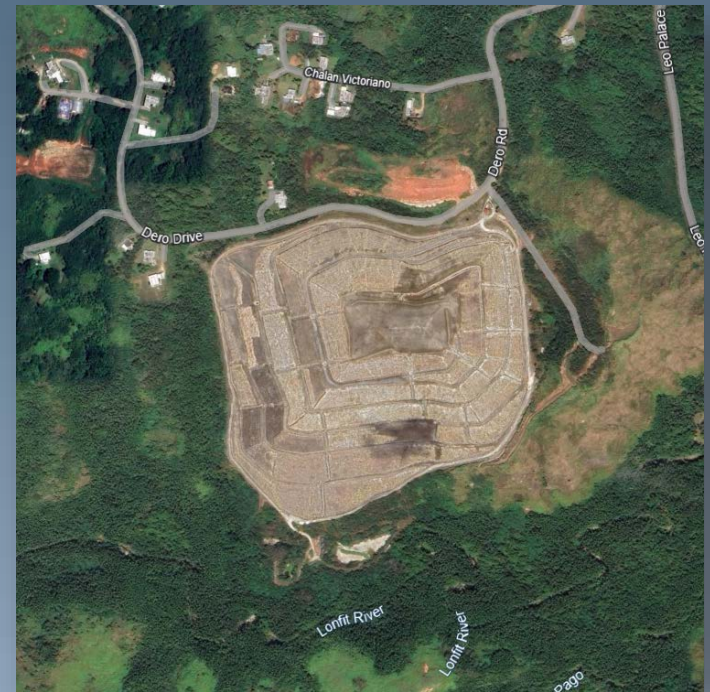




6. Similarly Closed Dumps Research (cont'd)

Ordot Dump Post-Closure Facility Ordot, Guam

- Use of this site for disposal goes back to World War II
- Site designated a Superfund site subject to CERCLA and under a Consent Order and Decree
- Unlined dump with waste believed to have been placed on saprolitic soils or the exposed bedrock surface
- Perimeter leachate collection to collect leachate from the waste mass and leachate impacted groundwater
- Modern cover system minimizes infiltration of precipitation into the waste mass





Guam SOLID WASTE RECEIVER



Florida Closed Landfills Reviewed

- Umatilla Landfill – Lake County
- Log House Landfill – Lake County
- Lake County Central Landfill Lake County
- Orange County Landfill – Orange County
- St. Cloud Landfill – Osceola County
- Bass Road Landfill – Osceola County
- Plymouth Ave Landfill – Volusia County
- Quincy Byrd Landfill – Gadsden County





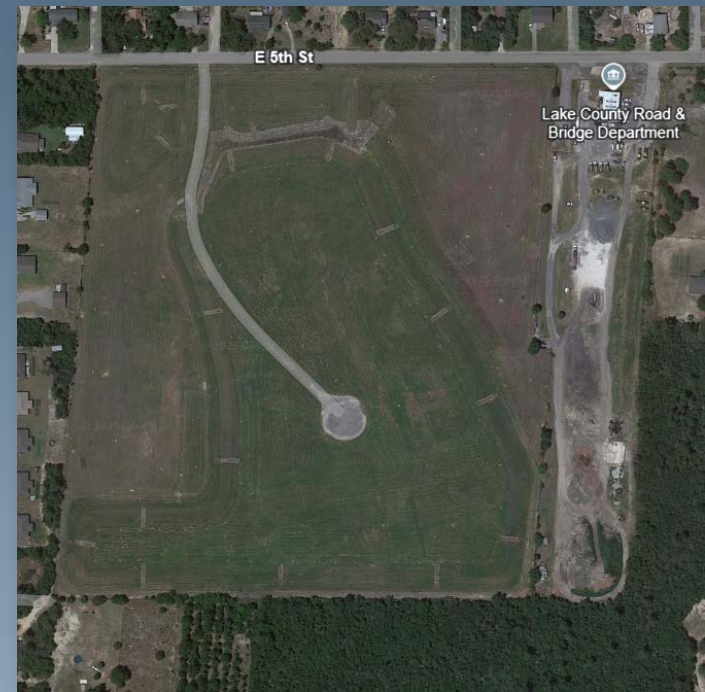
Guam SOLID WASTE RECEIVER



6. Similarly Closed Dumps Research (cont'd)

Umatilla Landfill – Lake County Florida (Facility ID No. 19814)

- Unlined landfill with low-permeability soil cover
- No leachate collection system
- Leachate is expected to flow into groundwater
- Unable to determine the impact of precipitation on leachate generation
- Not a Superfund Site





Guam SOLID WASTE RECEIVER



6. Similarly Closed Dumps Research (cont'd)

Log House Landfill – Lake County Florida (Facility ID No. 19821)

- Unlined landfill with medium to low permeability soil cover (1-foot)
- Sub-grade soils consist of poorly graded sand with high permeability
- No leachate collection system
- Unable to determine the impact of precipitation on leachate generation
- Not a Superfund Site





6. Similarly Closed Dumps Research (cont'd)

Lake County Central Landfill – Lake County Florida (Facility ID No. 19823)

- Modern landfill with impermeable liner and cover system (like Layon)
- Landfill was closed in 2016
- Liner and cover will prevent infiltration from all directions
- Experienced a leachate spill in 2009 due to heavy precipitation (18.5 inches in May 2009)
- Ordot received over 29 inches during Typhoon Mawar in two days
- Not a Superfund Site





Guam SOLID WASTE RECEIVER



6. Similarly Closed Dumps Research (cont'd)

Orange County Landfill – Orange County Florida (Facility ID No. 21847)

- Most cells are developed with modern impermeable liners and cover systems
- Early cells were used by USEPA to study the transmission of leachate and pollutants to shallow groundwater
- Modern liner and cover systems will prevent infiltration from all directions
- In 2022 a leachate spill occurred due to Hurricane Ian
- Not a Superfund Site

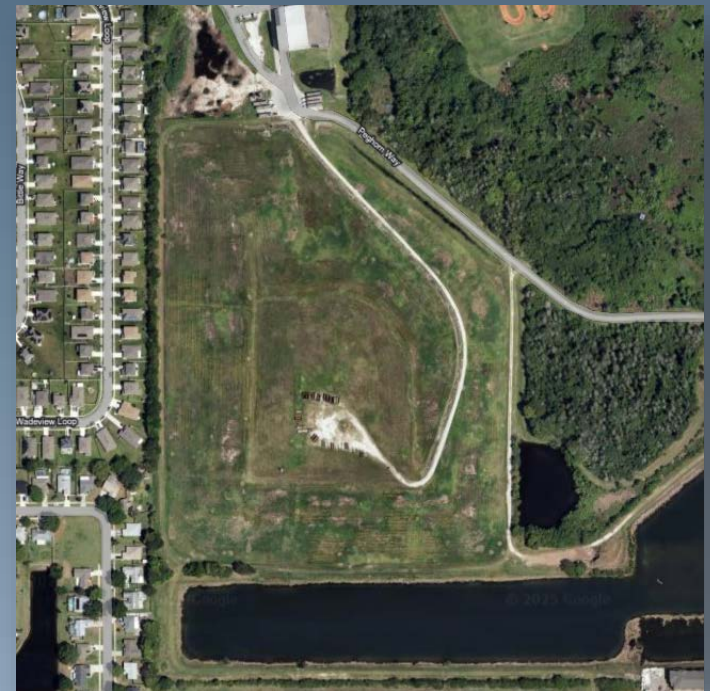




6. Similarly Closed Dumps Research (cont'd)

St. Cloud Landfill – Osceola County Florida (Facility ID No. 25469)

- Unlined landfill with a Geosynthetic Clay Liner on side slopes and a 40-mil polyethylene liner on top of the landfill
- A perimeter slurry wall with an interior leachate collection pipe is used to contain leachate
- 2014 Stabilization report shows leachate production correlates with precipitation
- Not a Superfund Site

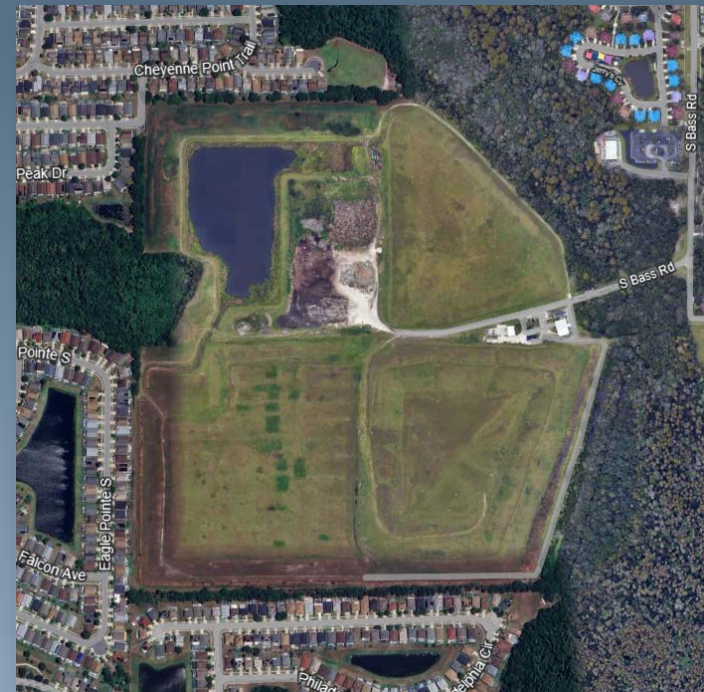




6. Similarly Closed Dumps Research (cont'd)

Bass Road Landfill – Osceola County Florida (Facility ID No. 25470)

- Unlined landfill approximately 50 acres in size with a 40-mil polyethylene liner in the composite cover
- There is no leachate monitoring or collection
- The impact of precipitation on leachate production is unknown
- Not a Superfund Site

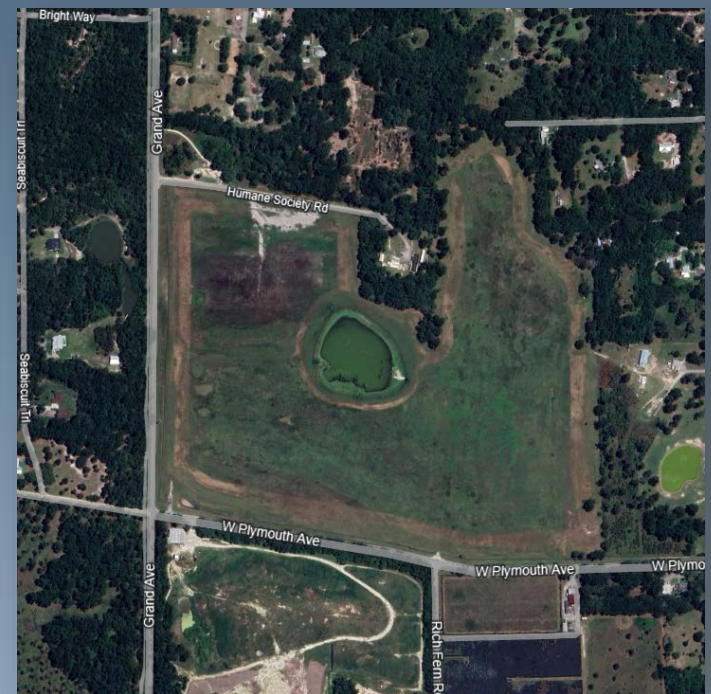




6. Similarly Closed Dumps Research (cont'd)

Plymouth Ave Landfill – Volusia County Florida (Facility ID No. 27539)

- Unlined landfill with a geosynthetic clay barrier as a low-permeability cover
- There is no leachate monitoring or collection
- Hydrologic studies show a high vertical flow rate, allowing leachate to migrate to groundwater
- There have been documented migration of contaminants from this landfill
- Not a Superfund Site





6. Similarly Closed Dumps Research (cont'd)

Quincy Byrd Landfill – Gadsden County Florida (Facility ID No. 5729)

- Partially lined landfill with a low-permeability cover system
- Located on soil formations above Quincy Creek
- Post-Closure Care estimates indicate 36,000 gallons per year is collected
- Waste bottom is in the sandy formation, well above bedrock (approx. 30-70 feet)
- Not a Superfund Site





Guam SOLID WASTE RECEIVER



Si Yu'us Ma'ase



GBB
SOLID WASTE
MANAGEMENT
CONSULTANTS